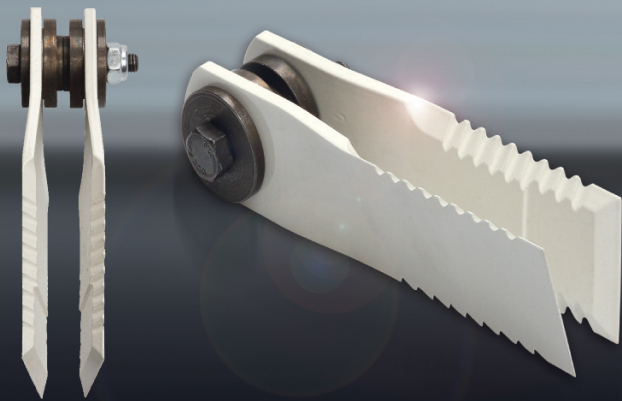


Paddle knife fitting instructions

radura®



RADURA Paddle knives are twisted to offer two major effects:

- 1st **Accelerate the air flow within the chopper**
- 2nd **Control the air flow upstream of the passive distributor**

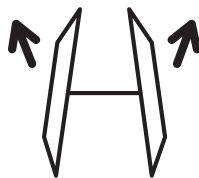
You can achieve various effects by arranging the RADURA Paddle knives in various patterns. These effects are the following:



[A] radial throw



[B] little radial effect



[C] axial throw



[D] axial throw to the right



[E] axial throw to the left

We recommend arranging the knife pairs in a pattern that suits the individual design of the straw chopper and the positions of the deflector plates.

See the attached document for examples of **how to arrange** the knives in various chopper models. The arrangement chosen is down to the total number of knives, the spreading width, and **the work width**.

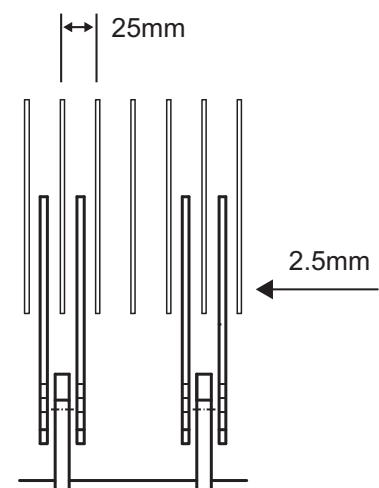
Distributor: SCHUMACHER.plus GmbH . Siegener Str. 10 . 57612 Eichelhardt . Germany . groupschumacher.com

Fitting instructions:

- Trial the knives in uniform crop stands. Trialling them in difficult conditions (weed pockets, down crop, wind gales) may lead to erroneous settings as to spreading width and volume.
- Before operating the knives for the first time, align the right and left deflector plates of the passive spreader so these are parallel. Ensure that all deflector plates align with each other (for more information see the combine manual).

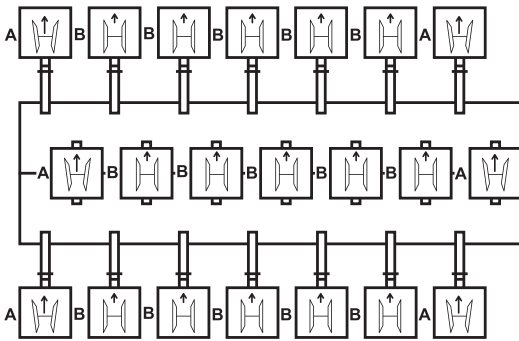
Note:

- When fitting Paddle knives for the first time, ensure that twisted knives do not foul with the counterblades (ensure the counterblades are properly adjusted and the rotor shaft is centered!).
- Ensure a **minimum gap of 25mm between the counterblades** when using Paddle knives!
- To ensure the gap is correct, turn every single knife manually to the counterblade and check the gap. **(The minimum gap between knife and counterblade is 2.5mm)**
- The Paddle knives are not suitable for chopping corn.
- The knives and mountings are made from complementary materials. Therefore it is recommended to always use genuine Schumacher parts. When replacing the knives, replace also all fasteners and bushings. Failure to observe this instruction may lead to machine damage!

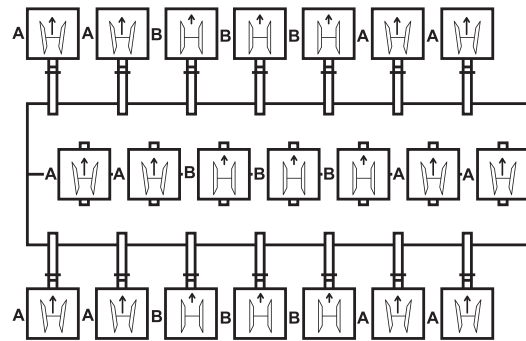


Examples of arranging the knife pairs

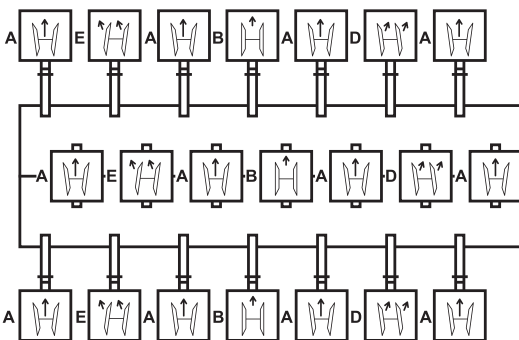
7 knife pairs per row* – 6m work width



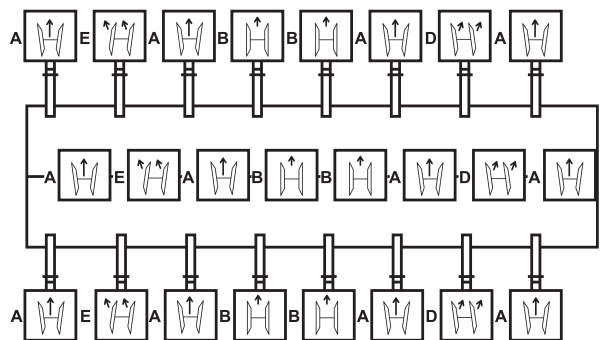
7 knife pairs per row* – 7m work width



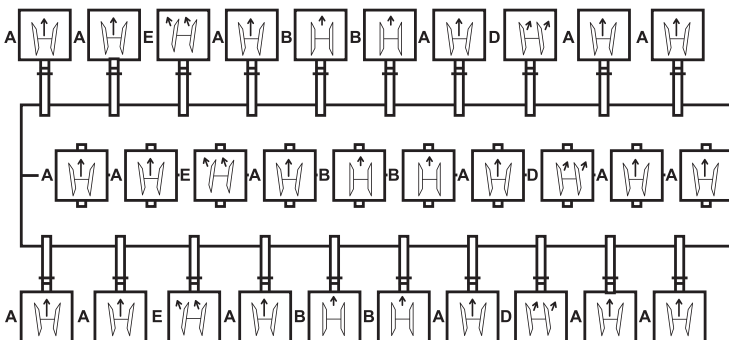
7 knife pairs per row* – 9m work width



8 knife pairs per row* – 7m work width



10 knife pairs per row* – 9m work width



* If different numbers of knife pairs are fitted in the individual rows, choose an average pattern of arrangement.